

95 Express Monthly Operations Report – January 2015

General

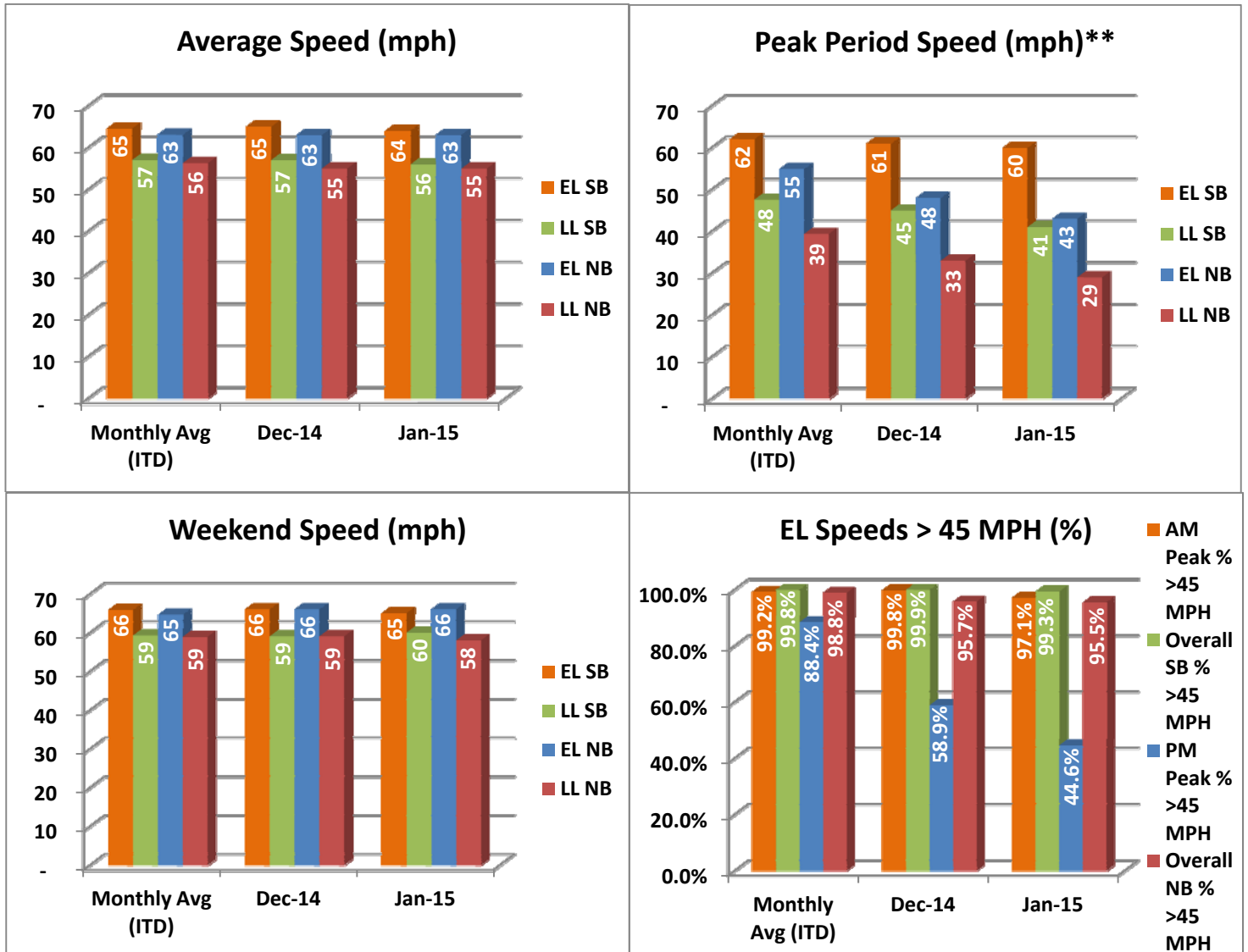
In total, the 95 Express Lanes:

- ✓ Serviced 1,826,085 vehicle trips in January 2015, bringing the total since opening (December 5, 2008) to approximately 110.9 million trips.
- ✓ Had estimated monthly toll revenue of \$2.47 million in January 2015, bringing the total revenue to date to approximately \$96.5 million.
- ✓ Decreased to a total of 9,164 registered vehicles, resulting in 61,058 toll exempt trips.
- ✓ **Also note that values shown for December 2014, for Southbound 95 Express, are below typical and trends. The Department recognizes this and reserves the right to update and/or replace this report at a later date.**

<u>January 2015 Statistics</u>	<u>Southbound</u>		<u>Northbound</u>			
Total Trips	903,540		922,545			
Exempt Trips	31,477		29,581			
Revenue						
	\$1,192,496		\$1,275,783			
Tolls						
- Range	\$0.00 - \$10.50		\$0.00 - \$10.50			
- Avg. Weekday	\$1.73		\$1.88			
- Avg. Peak Period**	\$2.83		\$4.50			
- Avg. Weekend	\$0.66		\$0.56			
- Avg. Off Peak	\$1.39		\$1.11			
- 85 th Percentile Weekday	\$3.25		\$3.00			
Volume (veh)						
	EL	LL	EL	LL		
- Avg. Weekday	31,961	105,516	32,127	97,379		
- Avg. Peak Period**	8,962	17,527	7,900	16,146		
Speed (mph)						
	EL	LL	Δ	EL	LL	Δ
- Avg. Overall	64	56	8	63	55	8
- Avg. Peak Period**	60	41	19	43	29	14
Operated Above 45 MPH						
	99.3%		95.5%			
Remained Open to Motorists						
	74.5%		91.9%			
Closed due to Planned Construction						
	23.2%		2.8%			
Closed due to Non-recurring Events						
	2.3%		5.4%			
<i>EL (Express Lanes); LL (Local Lanes); **Peak Period is defined as 6-9 AM (southbound) and 4-7 PM (northbound).</i>						

Operations/Traffic Statistics - Speed Data

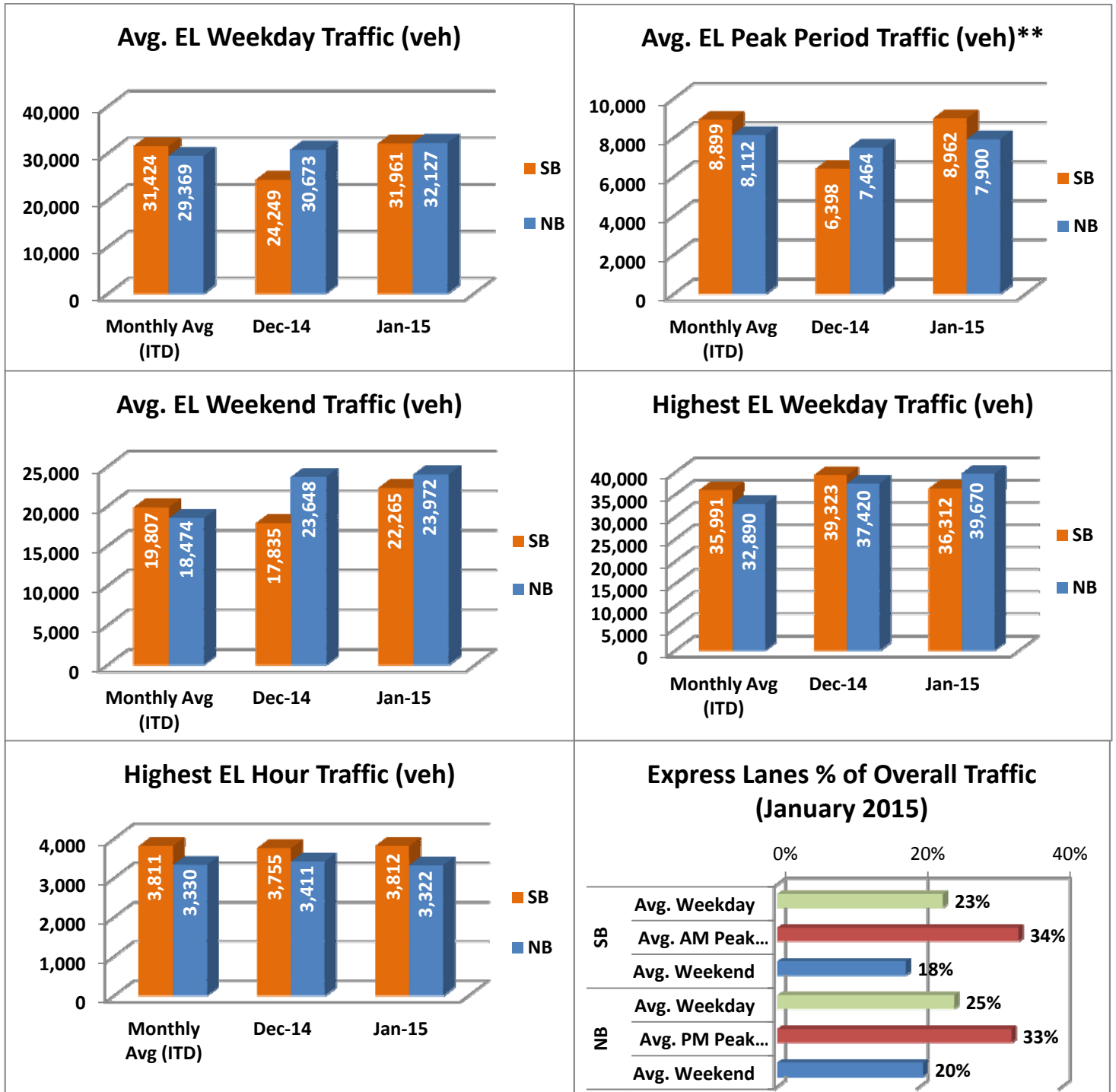
** Peak Period is defined as 6-9 AM (southbound) and 4-7 PM (northbound).



NOTE: ITD = Inception to Date; EL = Express Lanes; LL = Local Lanes

Operations/Traffic Statistics - Volume Data

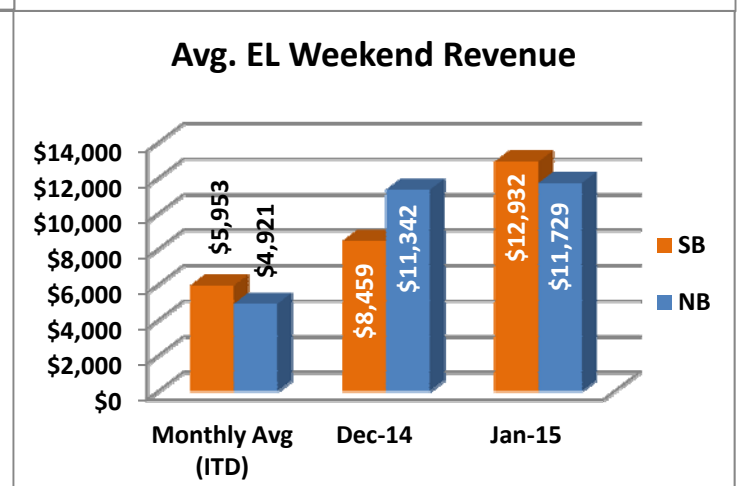
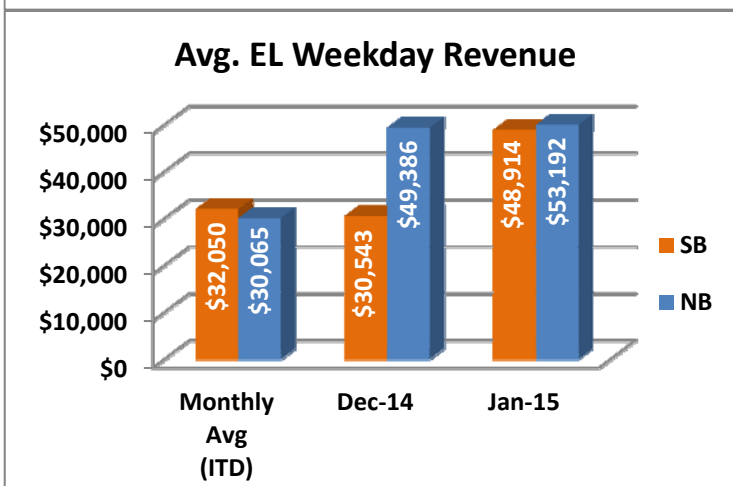
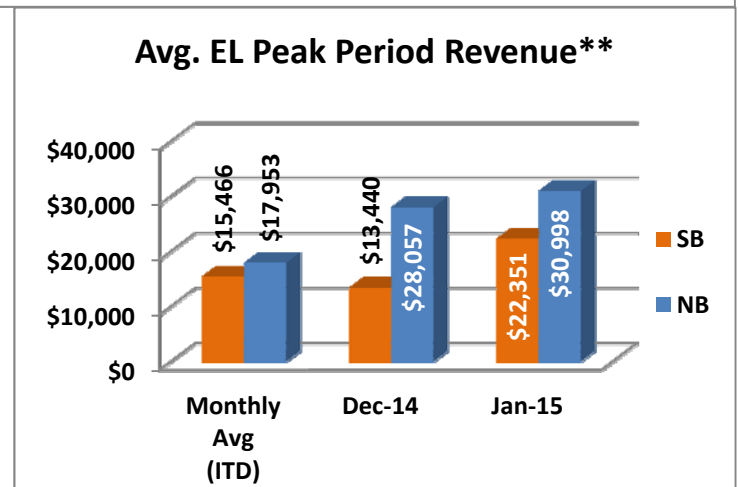
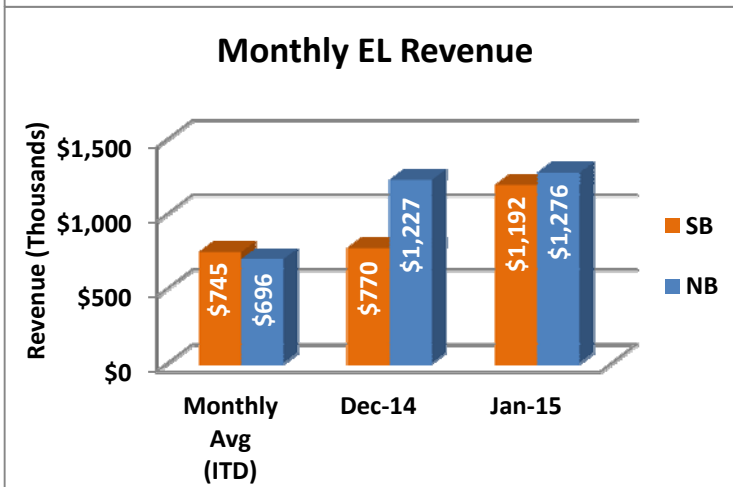
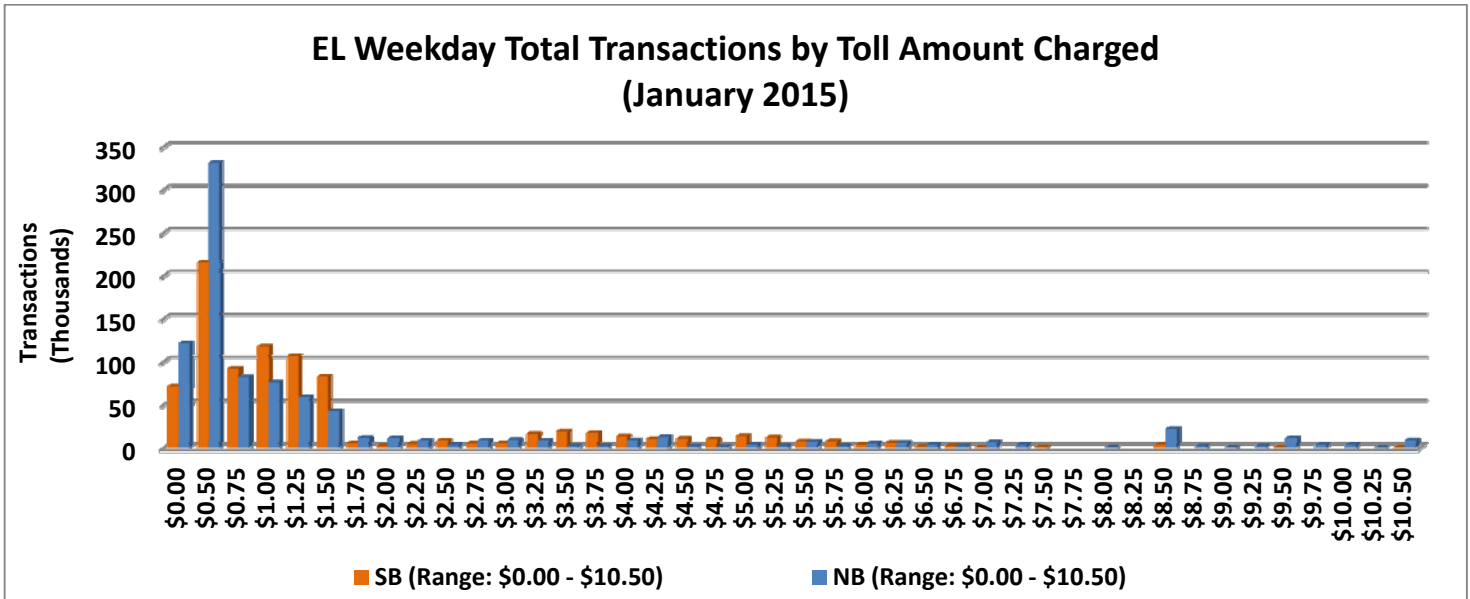
** Peak Period is defined as 6-9 AM (southbound) and 4-7 PM (northbound).



NOTE: ITD = Inception to Date

Revenue/Tolls Statistics

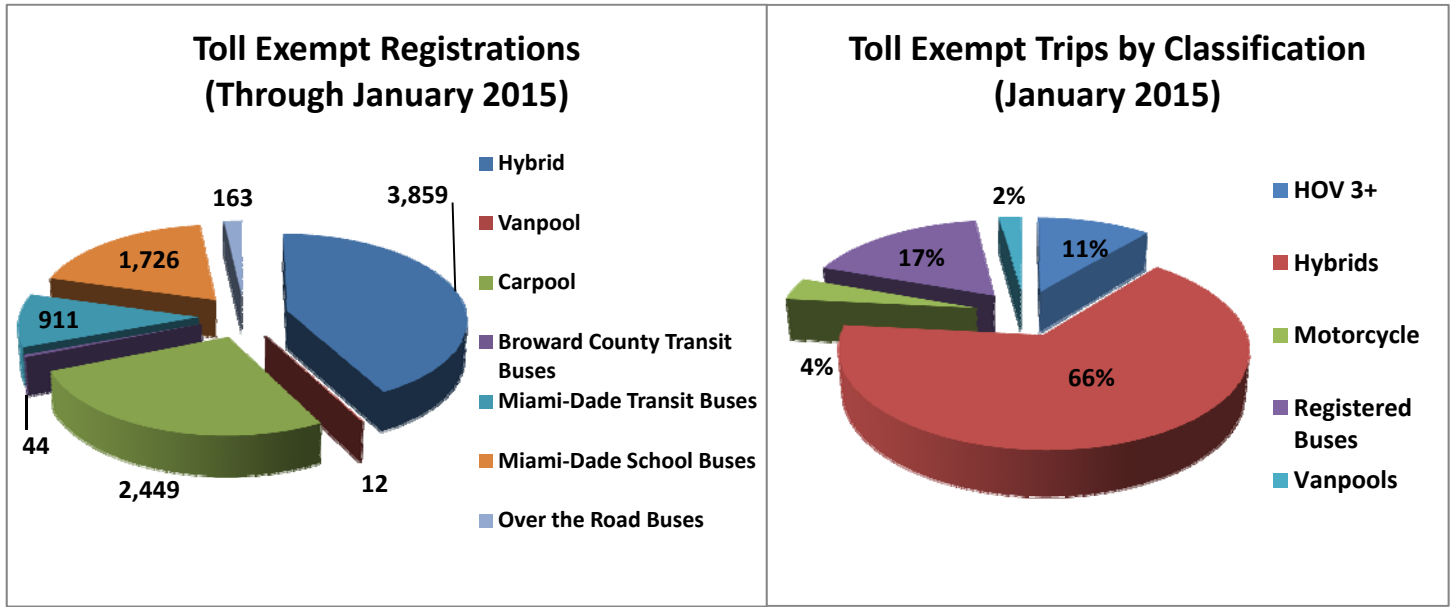
** Peak Period is defined as 6-9 AM (southbound) and 4-7 PM (northbound).



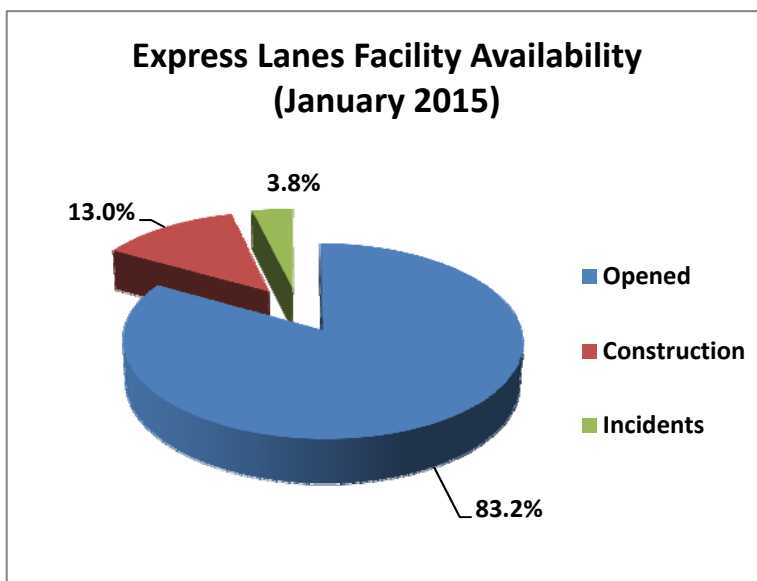
NOTE: ITD = Inception to Date

Registrations—Toll Exempt Trips

The total registrations through January 2015 decreased to 9,164. The 61,058 Toll Exempt Trips for this month are shown by classification below.



Facility Availability



The entire 95 Express lanes (both directions) were open to motorists 83.2% of the time, while closed 13.0% due to 26 planned construction/ maintenance events (each lasting approximately 7 hours, 27 minutes in duration, on average) and 3.8% due to 178 non-recurring events (each lasting approximately 19.1 minutes in duration, on average).